

Shearwell Data

**Farm Business
Grant - Wales**

**Shearwell Eligible
Products and
Prices**



**Shearwell
Data**

Animal Identification
& Management Systems

Full range online www.shearwell.co.uk

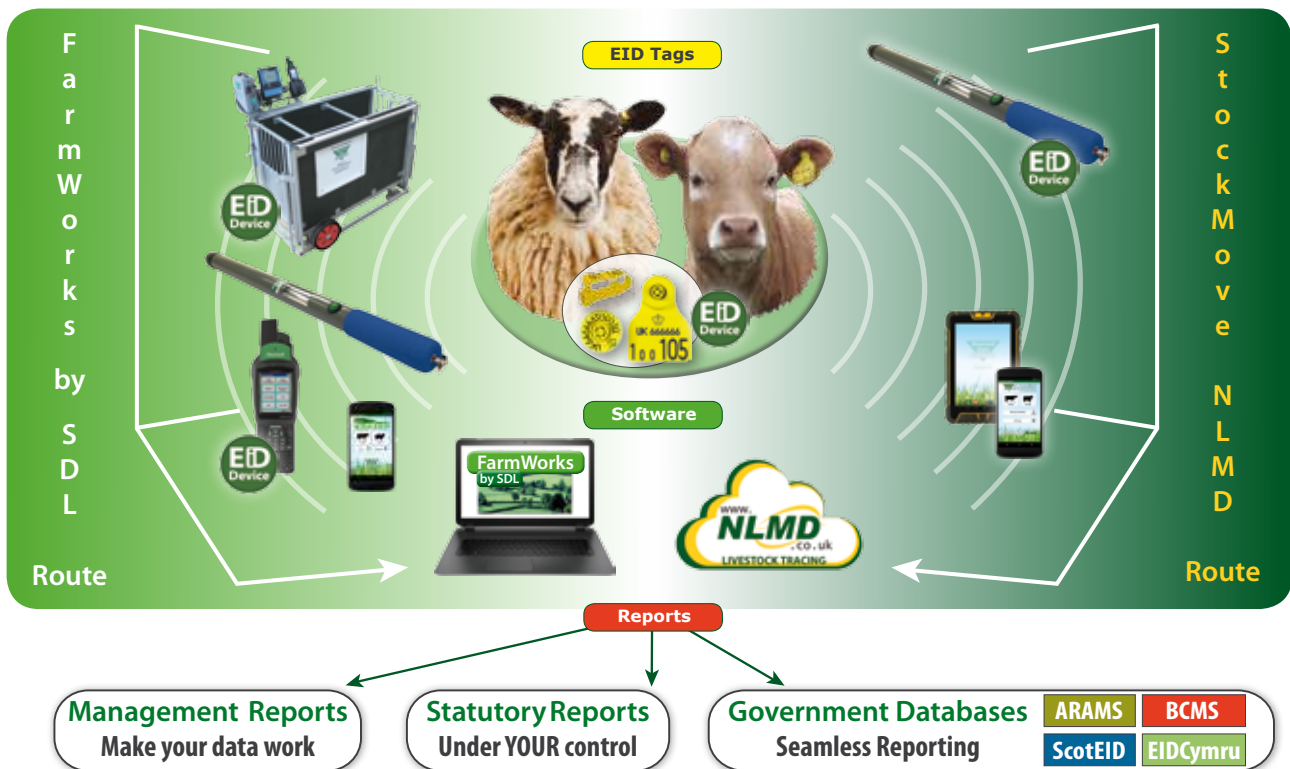


Shearwell - a complete solution



Data Flow from EID Tags to Reports

Comply with ease - All under your control



We have been designing EID equipment and software for more than twenty years. Our systems are designed to work together to help you make the most of your data.

Please get in touch for further information



Your local Welsh Speaking Representative

lisa.jones@shearwell.co.uk
Office: 01570 493144
Mobile: 07837 988 977



Investment	Specification
Sheep Equipment	
Electronic Weigh Scales	Electronic weigh crate with Electronic Weigh System. The weigh system will be a digital weighing device with the ability to record individual animals and track the live weight gains.



Shearwell Auto Draft Crate



£8,995 or £10,355 (with Shearwell Stock Recorder)

Shearwell Data has developed a system using our Stock Recorder and FarmWorks by SDL to enable the farmer to identify and draft animals easily.

Drafts are set up on FarmWorks by SDL software and downloaded onto the Shearwell Stock Recorder. This communicates with the SDL150 reader, the weigh head and the drafting controller by Bluetooth (wirelessly) and sends the commands to the drafting controller to open and close the relevant gates when a tag is read.

The drafting crate runs off a compressor and can be powered by mains electricity or generator (not included).

The reader will read all types of ISO compliant tags and bolus.

Includes:

- automatic **3-way drafter**
- ISO compliant Reader – SDL150 Race Reader, Antenna and Switcher
- EziWeigh7i Weigh Head with MP Load bars
- Console to hold reader, weigh head and drafting controller
- Powered Docking station for the Shearwell Stock Recorder
- Manual controller



Investment	Specification
Sheep Equipment	
Electronic Weigh Scales	Electronic weigh crate with Electronic Weigh System. The weigh system will be a digital weighing device with the ability to record individual animals and track the live weight gains.



Shearwell Sheep EID Weigh Crate

From £4,850 or from £6,210 (with Shearwell Stock Recorder)

Recording weights using the Shearwell weighing systems reduces time and provides a fast accurate method of capturing weight information.

Linked by Bluetooth (wireless) to the weigh head, the Stock Recorder will display the current weight; the last three weights with the dates the animal was weighed and the DLWG since the last record and stores the full weight history for the animal.

Includes:

- ISO compliant Reader – SDL130 Race Reader, Antenna and Switcher
- Te Pari Weigh Head with MP Load bars
- Console to hold reader and weigh head
- Powered docking station for the Shearwell Stock Recorder
- Sturdy wheels making the unit portable
- Powered by mains or battery
- Weatherproof – can be used outside in field



Investment	Specification
Sheep Equipment	
Electronic Weigh Scales	Electronic weigh crate with Electronic Weigh System. The weigh system will be a digital weighing device with the ability to record individual animals and track the live weight gains.



Shearwell Combi Clamp Conversion

Conversion from £4,334
plus Shearwell Stock Recorder (if required) = £1,580 Total = from £5,914

Convert your existing Combi Clamp into an EID crate.
Use with our Stock Recorder for a complete management system.

Weighing

Weigh Kit 669G-800	270
EziWeigh7i	870
MP 800 TruTest Load Bars	950
	2,090

Shearwell EID Part

Auxiliary frame, from	310
Reader & double antenna	1,550
Stock Recorder Cradle	134
Junction Box	250
	from 2,244

Total conversion price, from £4,334

Full price available for a new
Combi clamp and conversion



Investment	Specification
Sheep Equipment	
Electronic Weigh Scales	Electronic weigh crate with Electronic Weigh System. The weigh system will be a digital weighing device with the ability to record individual animals and track the live weight gains.



Te Pari Racewell Weigh Crates



DR3 Automatic Drafter

£8,920 - £14,403 (All options - see below)

DR3 Drafting Crate - Basic weigh and automatic 3-way drafter

To use without a Stock Recorder:

- to read EID tags and draft needs a T20 and Agrident reader = £10,549
- to just draft by weight (no EID tags) needs a T20 = £8,920

To use with a Stock Recorder:

- needs a T10, console (£234) and Agrident reader = £10,563 (Stock Recorder not included in prices)

Options:

- Shearwell Stock Recorder = £1,580
- Reducer panel for small lambs = £260
- Trailer = £2,000



These top of the range models can weigh and draft fully automatically by weight or EID and take the strain out of routine tasks such as dosing, inoculating and crutching.

HD3 Sheep Handler & Auto Drafter

£12,170 - £19,763 (All options - see below)



Automatic clamp and weigh, and automatic 3-way drafter

To use without a Stock Recorder:

- to weigh and draft and read EID tags needs a T20 and Agrident reader = £13,699
- to just weigh and draft with no EID tags needs a T20 = £12,170

To use with a Stock Recorder:

- needs a T10, console (£234) and Agrident reader = £13,713 (Stock Recorder not included in prices)

Options:

- Shearwell Stock Recorder = £1,580
- Side tilt and foot pedal = £1,470
- Foot pedal = £240
- Trailer = £3,000



HD6 Sheep Handler & Auto Drafter

£13,170 - £20,763 (All options - see below)



Automatic clamp and weigh, and automatic 6-way drafter

To use without a Stock Recorder:

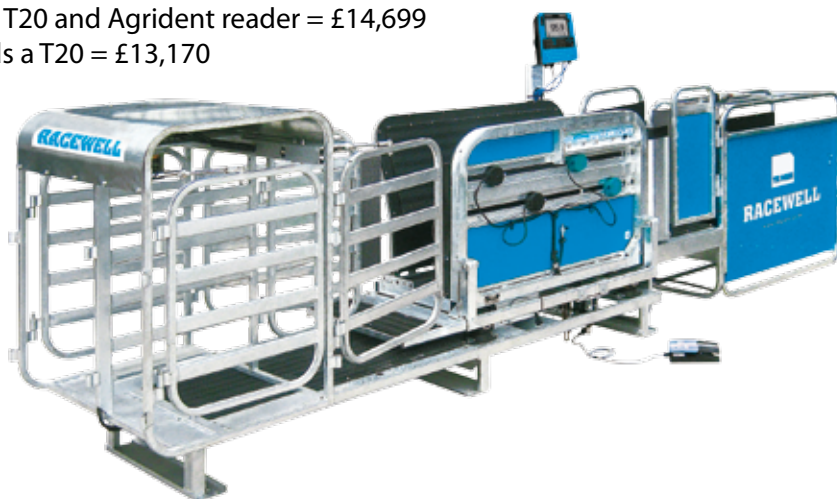
- to weigh and draft and read EID tags needs a T20 and Agrident reader = £14,699
- to just weigh and draft with no EID tags needs a T20 = £13,170

To use with a Stock Recorder:

- needs a T10, console (£234) and Agrident reader = £14,713 (Stock Recorder not included in prices)

Options:

- Shearwell Stock Recorder = £1,580
- Side tilt and foot pedal = £1,470
- Foot pedal = £240
- Trailer = £3,000



MC 3 way manual control sheep handler

£8,750 - £16,563 (All options - see below)



Manual clamp and weigh, and manual **3-way drafter** - using remote control or dashboard control

To use without a Stock Recorder:

- to read EID tags needs a T10 and Agrident reader = £10,279
- just clamp and weigh (no EID tags) needs a T10 = £8,750

To use with a Stock Recorder:

- needs a T10, console (£234) and Agrident reader = £10,513
- (Stock Recorder not included in prices)

Options:

- Shearwell Stock Recorder = £1,580
- Side tilt and foot pedal = £1,470
- Trailer = £3,000



JR Sheep Handler

£7,350 - £12,163 (All options - see below)



JR Sheep Handler - Manual clamp and weigh (no drafter) - using remote control or dashboard control

To use without a Stock Recorder:

- to read EID tags needs a T10 and Agrident reader = £8,879
- just clamp and weigh (no EID tags) needs a T10 = £7,350

To use with a Stock Recorder:

- needs a T10, console (£234) and Agrident reader = £9,113
- (Stock Recorder not included in prices)

Options:

- Shearwell Stock Recorder = £1,580
- Side tilt and foot pedal = £1,470
- Foot pedal = £240



Investment	Specification
Cattle Equipment	
Cattle crush (Squeeze)	Hydraulically operated squeeze crush for cattle.



Te Pari Titan Hy

Hydraulic
cattle crush

Please contact us for details and pricing



Bateman Hydraulic Cattle Crush

Hydraulic squeeze crush

Please contact us for details and pricing



Weigh Heads / Scales

T20 - Technically Advanced Scale

This technically advanced indicator with full drafting capabilities provides and stores a wide range of detailed data as the base for a modern livestock management system. With this added functionality you can take your livestock management to the next level.

Additional Features of the T20

- Drafting manual and automatic up to 9 ways
- Fully compatible with Te Pari auto drafters
- Hold mode for drafting
- 3 entry fields for additional drafting criteria



SOL-TT20

£1,070

All Te Pari weigh heads are compatible with Te Pari, Tru Test, Gallagher, Iconix load bars

T10 Digital Weigh Head

All Te Pari weigh heads are compatible with Te Pari, Tru Test, Gallagher, Iconix load bars



- The T10 indicator is an entry level management indicator that allows you to collect and store animal ID's. It also provides basic information such as weight gain and dose rates. It's easy to set up and features a Favourites function for you to store and access your most commonly-used set-ups without needing to re-key every time.

- View up to three previous weights
- Compatible with the Shearwell Stock Recorder for drafting and weighing

SOL-TT10

£850

Tru Test EziWeigh7i

- Entry level indicator for use with the Shearwell Stock Recorder for drafting and weighing



EziWeigh7i

£870

Investment	Specification
Cattle Equipment	
Weigh Bars/ Platforms	Load bars or a platform that is compatible with the crush in place and with an electronic weigh system



Weigh Platform with integrated load cells

A lightweight and easy to use alloy weigh platform that is ideal for the regular weighing of cattle. Being lightweight, it is easy to lift and can be stored inside when not in use. Fits most types of cattle crushes.

- Suitable for weighing up to 2,000kg
- Size 2,200mm x 650mm x 150mm (7'3" x 2'2" x 6" approx.)
- Compatible with Te Pari weigh heads



SOL-AWPILC

£1,270

Load Bars

Te Pari Multi Purpose

- Weigh up to 2,000kg
- 600mm (2' approx) wide
- Compatible with Tru Test and Te Pari weigh heads
- Tough enough for all your sheep weighing and drafting routines

SOL-TISL600

£750



Te Pari Heavy Duty

- Weigh up to 4,000kg
- 1,000mm wide
- Compatible with Tru Test and Te Pari weigh heads
- Tough and fully weatherproof
- 'Ball and socket' cushioning to protect against extreme vibrations

SOL-TISL4000

£1,145



Tru Test Multi Purpose

- Easily transported from site to site.
- Compatible with Tru Test and Te Pari weigh heads
- MP 600 - Weighs up to 2,000kg - Ideal for cattle platforms, sheep platforms, sheep crates, pig platforms, pig crates
- MP 800 - Weighs up to 3,000kg - Ideal for mobile cattle crushes, cattle platforms, horse platforms, pig platforms, pallet weighing
- MP 1010 - Weighs up to 2,000kg - Ideal for mobile cattle crushes, cattle platforms, pig platforms, horse platforms, pallet weighing

SDL-LB-600

£860

SDL-LB-800

£950

SDL-LB-1010

£1,082



Tru Test Heavy Duty

- Designed for permanent installation under crushes
- Unique footing absorbs potential side loading.
 - Weighs up to 3000kg
 - Compatible with Tru Test and Te Pari weigh heads
 - Two available lengths: HD 1010mm and HD 800mm

SDL-LB-800HD

£1,113

SDL-LB-1010HD

£1,242



Investment	Specification
Sheep Equipment	
EID hand held devices	Handheld stock reader with RFID technology for individual reading and recording of animals that is capable of exporting data to a computer based software package for the active monitoring of livestock.

Stock Recorder

EID Reader & comprehensive data logger

Recommended for its speed and accuracy in recording livestock data, the Stock Recorder has a built-in EID tag reader. It can be used to record births, weights, treatments, movements, comments and much more. Use the Stock Recorder with a Tru Test or Te Pari weigh head for automatic drafting and weight capture.

It is easy to use, rugged and reliable and it helps livestock farmers stay on top of statutory recording. Individual animal information is available out on farm and it can link with the Shearwell and Te Pari sheep management crates and dosing gun.

The Stock Recorder works seamlessly with our software FarmWorks by SDL (*which is supplied free when a Stock Recorder is purchased*) to help you plan and manage your livestock more profitably, produce accurate paperwork and fulfil your statutory requirements.



Shearwell Stock Recorder

SDL-WG41CMP

£1,580

FarmWorks by SDL



For PC - communicates with our Stock Recorder and FW mobile app

FarmWorks by SDL is a comprehensive livestock management program that helps turn livestock data into useful and usable management information.

Helps to identify productive and non-productive animals. FarmWorks by SDL also assists with statutory record keeping, creating official statutory documents and can send movement / birth information to BCMS and movement information to ARAMS.

- Complete (Cattle & Sheep) SDL-FWCS £525
- Cattle only SDL-FWC £375
- Sheep only SDL-FWS £375

Investment	Specification
Sheep Equipment	
EID hand held devices	Handheld stock reader with RFID technology for individual reading and recording of animals that is capable of exporting data to a computer based software package for the active monitoring of livestock.

EID Stick Readers



App Compatibility
Red handle - Android
Blue handle - iPhone & Android

EID Stick Reader SDL400S (Red handle)
SDL410-M-KT £500

EID Stick Reader SDL440S (Blue handle)
SDL440-M-KT £550

Black Plastic Case
SDL400-C-M £50

Bluetooth Mobile Printer
AP1300BT-KT £245

Optional Plastic Case & Mobile Printer (printer also compatible with our Stock Recorder)

StockMove Express App



Information in your pocket - even without the Stick or animal!



- FREE cattle and sheep app for iPhone and Android.
- Receives data from Shearwell EID Stick Readers.
- Access your animal data - wherever you are - even without the Stick Reader.
- Send statutory data to BCMS, ARAMS, ScotEID, and EIDCymru
- Uses our online service NLMD-LT.
- Maintain holding and herd registers.
- Easy animal search - just enter the last few digits of a tag - for an on-screen list of possible matches.

“Brilliant app, makes life so much easier!”



Download StockMove Express app for FREE.

For more comprehensive reporting, via NLMD-LT an annual fee of £30 is charged:

NLMD-LT Management

SDL-SMEF

£30

Investment	Specification
ICT	
Farm Software, business and physical recording applications (subscription fees not included)	Mid – high spec packages (not to include starter or basis options) for either livestock or crop management, or combined modules. Packages must be capable of recording physical information to manage enterprise performance and assist with compliance. This does not include annual support charges or subscriptions.



FarmWorks by SDL



For PC - communicates with our Stock Recorder and FW mobile app

FarmWorks by SDL is a comprehensive livestock management program that helps turn livestock data into useful and usable management information.

Helps to identify productive and non-productive animals. FarmWorks by SDL also assists with statutory record keeping, creating official statutory documents and can send movement / birth information to BCMS and movement information to ARAMS.

- Complete (Cattle & Sheep) SDL-FWCS £525
- Cattle only SDL-FWC £375
- Sheep only SDL-FWS £375

General Equipment

Auto ID Drench Gun

A drenching gun that wirelessly communicates with a weigh head to automatically adjust the dosage of drench or pour on depending on the animals weight

Call or
go online
today!

Te Pari Automatic Dosing Gun



An efficient, labour saving and innovative delivery system for progressive livestock producers!

Wirelessly connects directly to the Te Pari Weigh Scale or the Shearwell Stock Recorder using Wi-Fi; the precise dosage for each animal is calculated based on its weight and this is transmitted to the gun. The exact dosage, no more and no less, is ready to administer to the animal.

By applying a precision dose based on the animal's actual weight the dosing gun reduces the costly wastage of overdosing and reduces the likelihood of product resistance caused by under dosing.



Three attachments are available



Drenching Cattle

Drenching Sheep

Pour on application

G20 Automatic Calibration

SOL-TPG20DG

£850

Please note - Shearwell supply quotes and products that fit the specification of Farm Business Grant. The grants are issued and managed by The Welsh Government Rural Communities – Rural Development Programme for Wales. Shearwell does not have any involvement in the issuing of grants.

*Shearwell Data, Putham, Wheddon Cross,
Minehead, Somerset, TA24 7AS*

**Shearwell
Data**

Animal Identification
& Management Systems