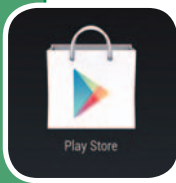


# Quick Start Guide - FarmWorks Mobile

## Requirements

- » Android smartphone or tablet.
- » WiFi - your phone/tablet and your computer must be on the same broadband router.
- » The latest version of FarmWorks installed on your PC.
- » FarmWorks Mobile license and subscription.

1.



### Download FarmWorks Mobile

- ▶ Touch the Google Play Store icon on your mobile phone or tablet.
- ▶ In the search box at the top, search for 'shearwell farmworks'
- ▶ Select **FarmWorks Mobile** in the search result, then press **Install**.

2.



### License FarmWorks Mobile

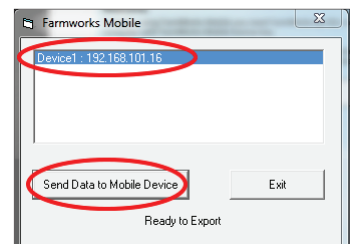
- ▶ Call Shearwell to request a FarmWorks Mobile subscription be added to your FarmWorks annual support. You will receive a license key.
- ▶ Open FarmWorks on the PC. Click on **Help > Register FarmWorks by Shearwell Data Ltd**. Select **FarmWorks Mobile**.
- ▶ Enter the license key. Click **Register**.

3.



### Load your farm details

- ▶ Switch your phone or tablet to WiFi. Connect to the same network as your PC.
- ▶ Open **FarmWorks Mobile**. On the welcome screen press **Next**. Your device will start searching for FarmWorks.
- ▶ Open FarmWorks on your PC. Go to **Data Transfer > FarmWorks Mobile > Send Data to FarmWorks Mobile**.
- ▶ Click on your device name. Click **Send Data to Mobile Device**. Click **OK** on the warning message.
- ▶ Wait for the two programs to synchronize. When the process is complete the FarmWorks Mobile screen will open and you can start recording data.

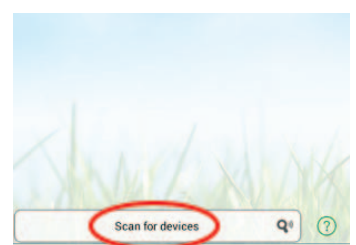
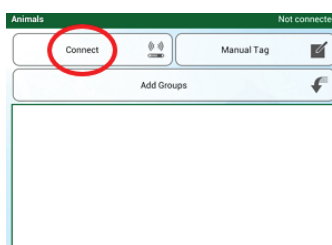
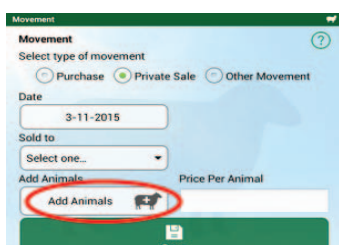


4.



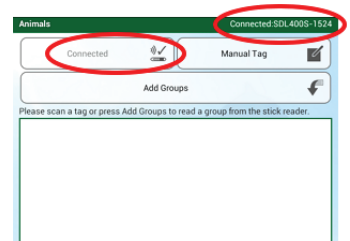
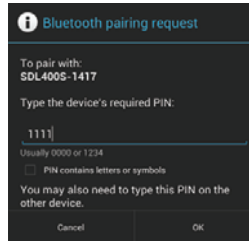
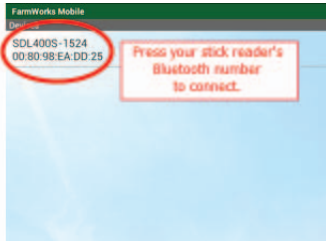
### Connect to your stick reader

- ▶ Turn on your stick reader. Look on the back of the stick reader for its Bluetooth number. (Example: SDL400S 1234)
- ▶ Open **FarmWorks Mobile**. Touch either the cow or the sheep icon.
- ▶ Touch **Statutory**. Select a **Movement** (Example: Private sale)
- ▶ Touch **Add Animals**. Touch **Connect** at the top of the screen.
- ▶ Touch **Scan for Devices** to find the Bluetooth signal from your stick reader.



# Quick Start Guide - FarmWorks Mobile

- ▶ Find your stick reader's Bluetooth number in the list and press on it.
- ▶ For a new connection you will be prompted to enter the pairing PIN.
- ▶ Enter the PIN '1111' and tap **OK**.
- ▶ Look for the tick and the stick reader icon in the top left of the screen. It will say **Connected** and the stick reader will display a blue light when there is an active connection. The stick reader number will be shown on the top right of the screen.



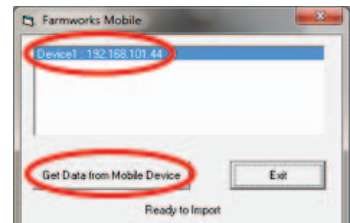
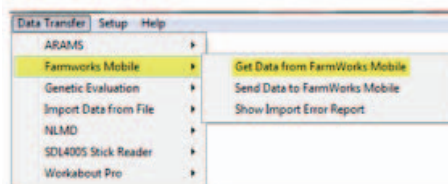
5.



## Sync your data

After you have used FarmWorks Mobile you must sync your data with FarmWorks on the PC.

- ▶ Switch your phone or tablet to WiFi.
- ▶ Open **FarmWorks Mobile**. Press **Sync**.
- ▶ Open FarmWorks on the PC. Go to **Data Transfer > FarmWorks Mobile**.
- ▶ Click **Get Data from FarmWorks Mobile**.
- ▶ Click on your device name, then click **Get Data from Mobile Device**.



After importing data from your phone or tablet you must sync your data the other way before you can use FarmWorks Mobile again.

Your computer has received your data. Remember to send data back to this app before using it again.

Close

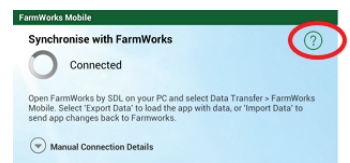
- ▶ On **FarmWorks Mobile** press **Sync**.
- ▶ In FarmWorks on the PC go to **Data Transfer > FarmWorks Mobile**.
- ▶ Click **Send Data to FarmWorks Mobile**.
- ▶ Click **Send Data to Mobile Device**. Heed the warning screen or click **OK** to continue.

6.



## Use the FarmWorks Mobile Help Guide

Touch the help icon at the top right-hand corner of any page to open a help screen.



For technical support telephone: **+44 (0) 1643 841814**  
 Monday to Friday between 8am - 5pm GMT.  
 Email technical support at: **support@shearwell.co.uk**