

Instructions for Inserting Shearwell SET Tags

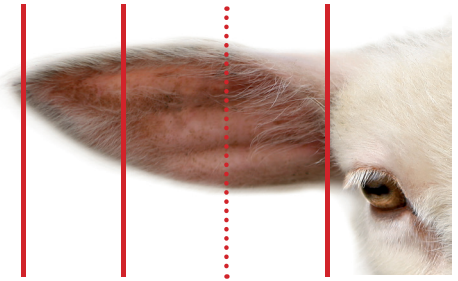
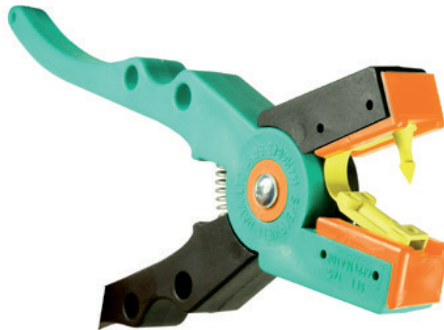
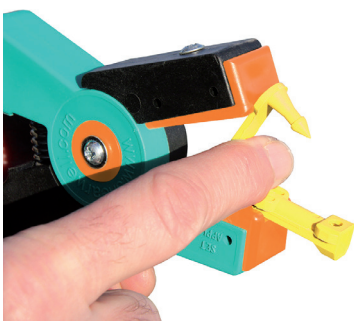


USDA / Scrapie approved for Sheep and Goats

Using the correct tagging procedure will improve animal welfare and help reduce tag losses. Avoid tagging in hot weather and when fly strike is likely. Tagging at birth is recommended, where possible.



- Pull one SET tag from the strip of tags. Load the tag into the applicator, making sure each end clicks into place. Disinfect the tag.



1. Hold the sheep securely.
2. Position the tag on the upper edge of the ear, close to the head, about a third of the way from the base of the ear (see *dotted line*). On long-eared goats, place the tag either above or below the level of the eye.

Note: Older sheep with very thick, tough ears can be tagged on the bottom of the ear where the skin is thinner. Note that tags in the bottom of the ear are more prone to damage from feeders and fences.

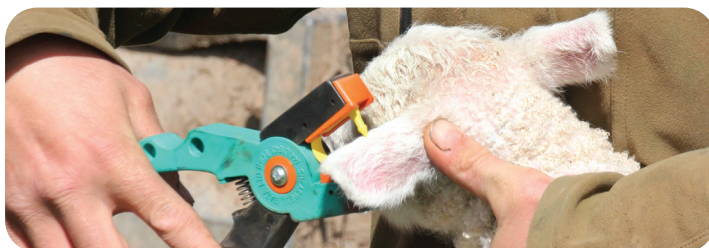
3. The spike of the tag should go in from the top of the ear. The animal number should be on the top of the ear, and the microchip should be on the inside of the ear.

4. Avoid piercing the cartilage 'ribs' of the ear, which can deform the ear or result in infection.

5. Leave room for the ear to grow when tagging lambs. Allow 4 - 5 mm (approx. 1/4 inch) of space between the loop of the tag and the edge of the ear.

Note: If a tag is placed too tight and deforms the ear, then cut the tag at the bend to prevent infection and allow the ear to grow. A SET tag split at the 'hinge' will not fall out!

6. Squeeze the handles together until you hear the click as the tag snaps closed.



Please turn
over for
important
tag storage
information!



Important storage information for Shearwell SET Tags



Why are storage conditions so important for tags?

It's important to keep your new tags stored in a sealed container if they are not being applied immediately.

Plastic can be affected by humidity in the air. If tags are kept in dry conditions for long periods of time then the plastic can dry out and become brittle.

Tags kept in high moisture conditions for a long time can absorb extra moisture and become too soft and difficult to apply. Changes to the plastic don't happen over-night, but tags that are left out for months can be affected.

It is important that tags are in the correct condition to be applied.

How should I store my tags?

- In their original zipper-lock bag, with the top sealed.
- Inside a plastic food container with tight fitting lid, kept closed.
- Out of direct sun.
- In a warm, dry place. If a room is comfortable for humans, it's comfortable for tags.

